



We build strong kids,  
strong families,  
strong communities.

Tampa Metropolitan Area



#### 40 Developmental Assets® for Adolescents (ages 12-18)

Search Institute® has identified the following building blocks of healthy development – known as Developmental Assets – that help young people grow up healthy, caring, and responsible.

### Dear Stakeholders,

#### This was a year of great change for the Tampa YMCA.

- Bob Gilbertson, who provided strong, visionary leadership for 25 years, made the difficult decision to leave Tampa and assume leadership of the YMCA of Greater Seattle;
- The visioning process for a new strategic plan was begun. The new strategic plan will guide the YMCA into the future, taking a good, hard look at who we are, what our mission to this community should be, and where and how we should expand our facilities and services;
- In 2006, the Tampa YMCA found new energy and vision in bringing developmental assets to the children and teens we serve. We continue our efforts to incorporate the essential building blocks for the healthy development of children into all YMCA youth programs. Search Institute® has identified these 40 Developmental Assets (printed on the previous page), as the necessary building blocks for healthy development that help young people grow up healthy, caring, and responsible.

The Tampa YMCA remains committed to positively impacting the lives of all children and families. It is imperative that we tackle the hard work of ensuring that every child in this community has the magic number of 31 developmental assets in his or her life. Thirty-one assets represent the baseline for positive growth for most youngsters. The challenge of engaging parents, teachers, religious leaders, and youth workers in serious dialogue about how our community values youth is upon us. Promoting healthy lifestyles that balance development of spirit, mind and body remains a priority. And, most importantly, the Tampa YMCA must be accessible and available to everyone in our community. We invite you to join us in these important endeavors in the months ahead.

As we move forward towards new leadership and a new vision, please keep the YMCA in your prayers. Staff and volunteers of the Tampa YMCA value the counsel, friendship and support of all YMCA stakeholders.

Sincerely,



**Laurie Ellis**  
Interim CEO



**Troy Fowler**  
Chairman of the  
Governance Board



**We Build Strong Kids, Strong Families, Strong Communities.**

# 40 BUILDING BLOCKS

- 1. Family support-** Family life provides high levels of love and support.
- 2. Positive family communication-** Young person and her or his parent(s) communicate positively, and young person is willing to seek advice and counsel from parents.
- 3. Other adult relationships-** Young person receives support from three or more nonparent adults.
- 4. Caring neighborhood-** Young person experiences caring neighbors.
- 5. Caring school climate-** School provides a caring, encouraging environment.
- 6. Parent involvement in schooling-** Parent(s) are actively involved in helping young person succeed in school.
- 7. Community values youth-** Young person perceives that adults in the community value youth.
- 8. Youth as resources-** Young people are given useful roles in the community.
- 9. Service to others-** Young person serves in the community one hour or more per week.
- 10. Safety-** Young person feels safe at home, school, and in the neighborhood.
- 11. Family boundaries-** Family has clear rules and consequences and monitors the young person's whereabouts.
- 12. School Boundaries-** School provides clear rules and consequences.
- 13. Neighborhood boundaries-** Neighbors take responsibility for monitoring young people's behavior.
- 14. Adult role models-** Parent(s) and other adults model positive, responsible behavior.
- 15. Positive peer influence-** Young person's best friends model responsible behavior.
- 16. High expectations-** Both parent(s) and teachers encourage the young person to do well.
- 17. Creative activities-** Young person spends three or more hours per week in lessons or practice in music, theater, or other arts.
- 18. Youth programs-** Young person spends three or more hours per week in sports, clubs, or organizations at school and/or in the community.
- 19. Religious community-** Young person spends one or more hours per week in activities in a religious institution.
- 20. Time at home-** Young person is out with friends "with nothing special to do" two or fewer nights per week.

## Essential to raising successful young people.

- 21. Achievement Motivation-** Young person is motivated to do well in school.
- 22. School Engagement-** Young person is actively engaged in learning.
- 23. Homework-** Young person reports doing at least one hour of homework every school day.
- 24. Bonding to school-** Young person cares about her or his school.
- 25. Reading for Pleasure-** Young person reads for pleasure three or more hours per week.
- 26. Caring-** Young person places high value on helping other people.
- 27. Equality and social justice-** Young person places high value on promoting equality and reducing hunger and poverty.
- 28. Integrity-** Young person acts on convictions and stands up for her or his beliefs.
- 29. Honesty-** Young person "tells the truth even when it is not easy."
- 30. Responsibility-** Young person accepts and takes personal responsibility.
- 31. Restraint-** Young person believes it is important not to be sexually active or to use alcohol or other drugs.
- 32. Planning and decision making-** Young person knows how to plan ahead and make choices.
- 33. Interpersonal Competence-** Young person has empathy, sensitivity, and friendship skills.
- 34. Cultural Competence-** Young person has knowledge of and comfort with people of different cultural/racial/ethnic backgrounds.
- 35. Resistance skills-** Young person can resist negative peer pressure and dangerous situations.
- 36. Peaceful conflict resolution-** Young person seeks to resolve conflict nonviolently.
- 37. Personal power-** Young person feels he or she has control over "things that happen to me."
- 38. Self-esteem-** Young person reports having a high self-esteem.
- 39. Sense of purpose-** Young person reports that "my life has a purpose."
- 40. Positive view of personal future-** Young person is optimistic about her or his personal future.

We Build Strong Kids,





Clifton helps Jordan in the Adaptive Gymnastics Class.

**Asset #9**

TEEN PROGRAMS

DO SOMETHING GOOD

YMCA SUCCESS CENTERS

TEEN LEADERS IN TRAINING

Y GIRLS RULE PROGRAMS

OPHELIA YOUNG WOMENS' LEADERSHIP BOARD

Y's CHOICES

ACTIVE OLDER ADULTS

TEEN ADVISORS



The YMCA believes it's important for young people to learn how to live and act in the world around them- to explore, express, belong, and serve. Service to others gives young people opportunities to test ideas and behaviors and to experiment with different roles. It provides empathy, understanding and a sense of satisfaction in knowing they have made a difference in the lives of others.

YMCA teens provided 12,148 hours of service in 2006. As participants on teen advisory boards, with community improvement projects, outreach activities with migrant children and fundraising, YMCA teens increased their leadership abilities, learned new skills and developed an understanding of the lives of those less fortunate.



**Developmental Asset #9**  
**Service to others-** Young person serves in the community one hour or more per week.



Asset #3

TEEN LEADERS' CLUBS

YOUTH SPORTS

SUMMER PROGRAMS

AFTER-SCHOOL PROGRAMS

Y GIRLS RULE PROGRAMS

MENTORS TO FOSTER KIDS

TEEN NIGHTS

TEEN ADVISORS

THE FIRST TEE OF TAMPA BAY

OPHELIA TEEN AMBASSADORS

YOUTH IN GOVERNMENT



At the YMCA we believe building strong kids involves engaging all of the people around them. Young people can only feel safe, valued, useful, and spiritually grounded if their family and other adults in the community provide them with the essential building blocks they need along the way.

In 2006, through the YMCA's Do Something Good Volunteer Program, 3,994 adult volunteers served as coaches, advisory board members, mentors, tutors and fundraisers throughout the Tampa Association. These volunteers modeled positive behaviors and values for youth while providing 72,839 hours of important service to the YMCA and their communities.



### Developmental Asset #3

**Other adult relationships-** Young person receives support from three or more nonparent adults.



In all YMCA activities, youth continually receive the support of adults and mentors.



**Asset #35**

- YOUTH SPORTS
- SUMMER PROGRAMS
- TEEN LEADERS' CLUBS
- YMCA SUCCESS CENTERS
- DO SOMETHING GOOD
- TRULY KNOWING ONESELF (TKO)
- TEEN LEADERS IN TRAINING
- Y's GUYS
- GIRLS CIRCLE
- OPHELIA TEEN AMBASSADORS
- THE FIRST TEE OF TAMPA BAY

The YMCA believes building strong kids is not about "fixing troubled kids." Building strong kids is about people, programs, institutions and systems that provide youth with the opportunities and the supports they need. It involves giving our youth the capabilities to resist involvement in situations which they know are wrong. Research shows that the more

building blocks, or assets, a young person has in their life the less likely they are to engage in risky behaviors and the more likely they are to succeed.



These YMCA teens give back to their community by painting over graffiti in their area.

**Developmental Asset #35**  
**Resistance skills-** Young person can resist negative peer pressure and dangerous situations.



## Volunteers of the Year

The Tampa Metropolitan Area YMCA has a long and successful history of attracting dedicated volunteers who generously donate of their time, talents and wisdom to ensure that the YMCA mission is put into action. While all of our volunteers are important to us, each year there are several who go well beyond the standard. It is our privilege to honor these 2006 Outstanding Volunteers ...



**Dena Shimberg**  
Bob Sierra Family YMCA



**Charles Goulding**  
Brandon Family YMCA



**Mark Bullard**  
Campo Family YMCA



**Alberta Jackson**  
Central City Family YMCA



**Ron Robards**  
Downtown YMCA Wellness Center



**Kevin Barrett**  
East Pasco Family YMCA



**Mike Stevens**  
The First Tee of Tampa Bay



**Cynthia Sanders**  
Interbay-Glover Family YMCA



**Bob Buesing**  
Tampa Metropolitan Area YMCA



**Lisa Cheryl Jack**  
New Tampa Family YMCA



**Lisa Joyce**  
Northwest Hillsborough YMCA



**Ronna Kennedy**  
The Ophelia Project – Tampa Bay



**Gini Watkins**  
Plant City Family YMCA

## Teen Volunteers of the Year

The Tampa Metropolitan Area YMCA is committed to the healthy physical, emotional and moral development of youth in our community. Several years ago, the Tampa YMCA decided to include developmental assets in all YMCA programs for young people. Developmental assets are identified by Search Institute as essential building blocks which help young people become healthy, caring and competent adults. Each of the following young people have displayed the positive behaviors which demonstrate the importance of these developmental assets in YMCA youth programming.



**Samantha Riner**  
East Pasco Family YMCA



**Sydney Sivitz**  
Bob Sierra Family YMCA



**Marshal Cuscaden**  
Brandon Family YMCA



**Akilah Scott**  
Central City Family YMCA



**Steven Romeo**  
The First Tee of Tampa Bay



**Colton Remiker**  
Interbay-Glover Family YMCA



**Demi Pendarvis**  
New Tampa Family YMCA



**Ricky Aspuria**  
Northwest Hillsborough YMCA



**Lauren Trotter**  
The Ophelia Project – Tampa Bay



**India Terr**  
Plant City Family YMCA

2006 was an outstanding year for the Tampa Metropolitan Area YMCA. Program highlights from the past year include:

**66,023 youth and teens benefited from asset-rich programs** designed to provide the building blocks essential for healthy development.

Through **YMCA Do Something Good** 3,994 men, women and children volunteered 72,839 hours of service throughout the community to help the YMCA meet our mission to build strong kids, strong families and strong communities.

In 2006, the YMCA began a **Workforce Empowerment** initiative (WE!) providing young adults, ages 16 to 22, with assistance in their transition to adulthood by focusing on employment needs and job readiness skills.

**Reaching beyond the walls** of YMCA facilities, health and wellness programs aimed at preventing childhood obesity, diabetes and asthma touched 88,449 young people and their families throughout our community.

Additionally, the **YMCA ACTIVATE AMERICA** initiative engaged 3,400 parents and children throughout the county in healthy activities in local neighborhoods.



The Tampa YMCA provided **1,154 foster children** with memberships where they received countless opportunities to participate in an asset rich environment. Sixty-eight new foster parents were recruited and trained. Parent's night out for foster parents, new back packs stuffed with school supplies, prom dresses, Christmas gifts and tutors were also supplied to support these youngsters.

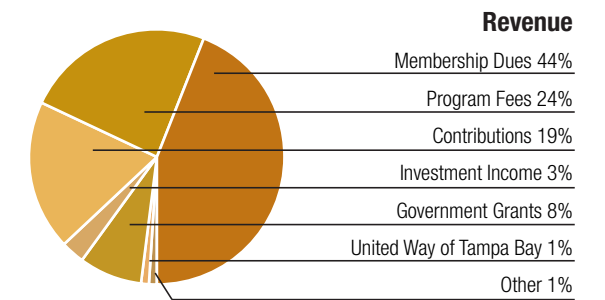
**After-school programs** served 3,515 youth through Childcare Services and in-branch programs. In addition, 245 well-deserving children from low income neighborhoods were served through YMCA Success Centers.

**YMCA Summer Day Programs** provided 6,047 youngsters with a full-day of asset-rich summer fun. Financial assistance in the amount of \$410,000 was provided to 1,732 of these youth.

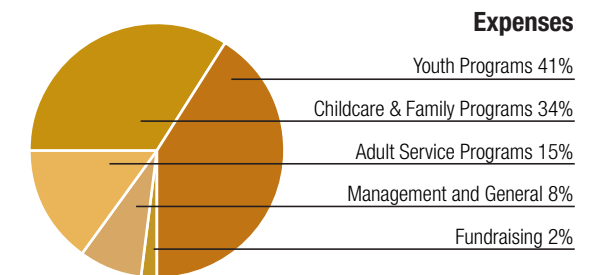
**Water safety and swimming skills** were taught to 5,484 youngsters in 2006 in YMCA Learn to Swim programs.



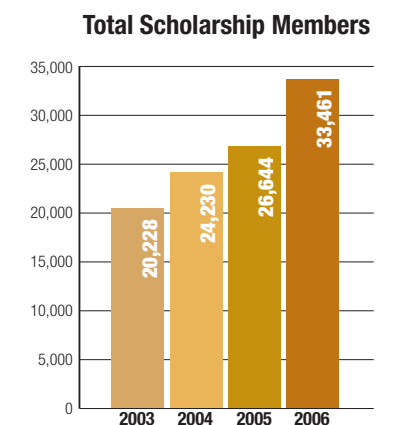
| <b>PUBLIC SUPPORT AND REVENUE</b>       | <b>Un-Audited 2006</b> | <b>Audited 2005</b> |
|---|------------------------|---------------------|
| Membership Dues                         | \$14,852,481           | \$13,825,712        |
| Program Fees                            | \$8,068,426            | \$7,984,499         |
| Contributions                           | \$6,501,693            | \$4,363,858         |
| Investment Income                       | \$1,141,893            | \$919,180           |
| Government Grants                       | \$2,797,806            | \$5,894,038         |
| United Way of Tampa Bay                 | \$406,533              | \$413,365           |
| Other                                   | \$194,614              | \$342,774           |
| <b>Total Public Support and Revenue</b> | <b>\$33,963,446</b>    | <b>\$33,743,426</b> |



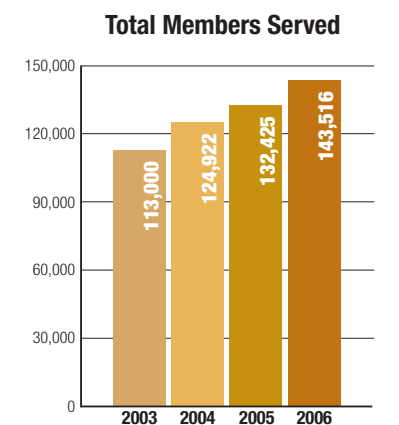
| <b>EXPENSES</b>               | <b>Un-Audited 2006</b> | <b>Audited 2005</b> |
|-------------------------------|------------------------|---------------------|
| Youth Programs                | \$12,661,480           | \$14,874,469        |
| Childcare and Family Programs | \$10,691,508           | \$10,352,699        |
| Adult Service Programs        | \$4,809,771            | \$4,726,792         |
| Management and General        | \$2,626,251            | \$2,208,567         |
| Fundraising                   | \$590,994              | \$602,112           |
| <b>Total Expenses</b>         | <b>\$31,380,004</b>    | <b>\$32,764,639</b> |
| <b>Change in Net Assets</b>   | <b>\$2,583,442</b>     | <b>\$978,787</b>    |



| <b>ASSETS</b>                 | <b>Un-Audited 2006</b> | <b>Audited 2005</b> |
|-------------------------------|------------------------|---------------------|
| Other Assets                  | \$7,311,826            | \$6,407,137         |
| Investments                   | \$8,976,479            | \$7,147,137         |
| Property, Plant and Equipment | \$36,159,515           | \$36,347,689        |
| <b>Total Assets</b>           | <b>\$52,447,820</b>    | <b>\$49,901,963</b> |



| <b>LIABILITIES &amp; NET ASSETS</b>       | <b>Un-Audited 2006</b> | <b>Audited 2005</b> |
|---|------------------------|---------------------|
| Other Liabilities                         | \$4,273,704            | \$4,311,289         |
| Bond Payable                              | \$18,800,000           | \$18,800,000        |
| <b>Total Liabilities</b>                  | <b>\$23,073,704</b>    | <b>\$23,111,289</b> |
| <b>Net Assets</b>                         | <b>\$29,374,116</b>    | <b>\$26,790,674</b> |
| <b>Total Liabilities &amp; Net Assets</b> | <b>\$52,447,820</b>    | <b>\$49,901,963</b> |



**#30 Responsibility-**  
Young person accepts and takes personal responsibility.





# Community Partners

The YMCA is fortunate to have a long history of collaborating within communities as we work to tackle some of the most challenging of today's problems. These partnerships allow us to serve this community better and more broadly while positioning the YMCA as a leader and key collaborator in getting the job done.

A Woman's Place Ministries  
AARP  
Achieve Tampa Bay  
Allegany Franciscan Foundation  
American Diabetes Association  
American Heart Association  
Argosy University  
Asthma and Allergy Association  
Bank of America  
BankAtlantic  
Bay Area Legal Services  
The Boys Project  
Boy Scouts of America-Gulf Ridge Council  
Brandon Chamber of Commerce  
Brandon Regional Hospital  
Care Options Program  
Catholic Charities  
Centre for Girls  
CHAP – Churches Association in Hillsborough County  
Children's Board of Hillsborough County  
The Children's Home  
City of Tampa  
City of Tampa Park and Recreations Department  
City of Temple Terrace  
College Hill Library  
Computer Mentors  
Conn Foundation  
Connected By 25  
Cornerstone Kids Ministries  
The Crossings Church  
Eckerd Family Foundation  
Family Enrichment Center  
Fifth Third Bank  
First Baptist Church of Palm River  
Florida Agency for Workforce Innovation  
Florida Department of Children and Families  
Florida Department of Health  
Florida Department of Transportation  
Florida Institute for Community Studies  
Florida Kinship Center  
Florida Mental Health Institute  
Foundation Familia Sana  
Gasparilla Distance Classic Association, Inc.  
Girl Scouts of the Suncoast Council  
Greater Palm River Point CDC  
Harris Temple AME Church

Haven Poe Center  
Healthy Start Coalition of Hillsborough County  
Hillsborough Community College  
Hillsborough County:  
- Anti-Drug Alliance  
- Child Care Licensing  
- Children's Services  
- Community Alliance  
- Extension Service  
- Health Department  
- Parks and Recreation Center  
- Resource and Referral  
- Sheriff's Office  
- Technical Education  
Hillsborough Kids, Inc.  
Hispanic Home Child Care Providers Association  
Hispanic Services Council  
Home Child Care Providers Association of Northeastern Hillsborough County  
Jan Platt Library  
Latin-American Family Home Child Care Providers & Centers Association  
Leadership Brandon  
The Lutheran Services Food Program  
Mendez Foundation  
Mental Health Care, Inc.  
Messiah Lutheran Church  
Moffitt Cancer Center  
MORE HEALTH and Tampa General Hospital  
The Ophelia Project (National)  
Ounce of Prevention Fund of Florida  
Palm River Point CDC  
Partners N Care Child Care Resource and Referral  
Partnerships in Prevention  
Patel Conservatory  
Positive Spin  
Quality Family Home Child Care Association  
Redlands Christian Migrant Association  
Rural Social Services Partnership  
Saunders Library  
Seminole Heights Homeowners' Association  
School District of Hillsborough County  
South Eastern Family Child Care Providers Association  
South Tampa Family Child Care Association  
The Spring of Tampa Bay

St. Joseph's Children's Advocacy Center  
St. Joseph's Children's Hospital  
St. Joseph's Hospital  
St. Lawrence Catholic School  
St. Mary's Episcopal School  
St. Peter Claver Catholic School  
SWAT  
Sylvia Thomas Center  
Take Charge  
Tampa Bay Workforce Alliance  
Tampa Community Health Centers  
Tampa Downtown Partnership  
Tampa Home Child Care Providers Association  
Tampa Preparatory School  
Town and Country Alliance  
Town and Country Hospital  
U. S. Centers for Disease Control  
U.S. Department of Labor  
United Hispanic Family Child Care Providers Association  
United Way of Tampa Bay  
University Area Community Development Center  
University of Florida Extension Site  
Unlimited Child Care Providers & Parent Association  
University of South Florida:  
- College of Anthropology  
- College of Education  
- College of Public Health  
- Kinship Center  
University of Tampa  
Upper Tampa Bay Chamber of Commerce  
Upper Tampa Bay Library  
VISN 8 Community Care Coordination Services  
West Central Florida Area Agency on Aging, Inc.  
Westchase Chiropractic

#7  
**Community values**  
**youth**– Young person perceives that adults in the community value youth.



# Contributors

These annual donors provide funds so that no one is turned away from YMCA programs, membership and outreach opportunities. Listing includes major sponsors of key events.

## FOUNDER'S CLUB (\$10,000 and up)

Allegany Franciscan Foundation  
Anonymous  
APEX Financial Group, Inc.  
Blue Cross and Blue Shield of Florida  
John & Tilda Brabson  
Brandon Buick/Suzuki  
Bright House Networks  
Lynn & Dewey Burnsed  
City of Dade City  
City of Zephyrhills  
Clorox Company  
Community Foundation of Sun City Center  
Conn Memorial Foundation  
Joy McCann Culverhouse  
Eckerd Family Foundation, Inc.  
Fifth Third Bank  
The First Tee  
The Gibson Family  
Greater Brandon Community Foundation  
Myrna & Gary Haag  
The Estate of David Heit  
Hillsborough Kids, Inc.  
The Joy McCann Foundation  
J.C. Penney  
JPMorgan Chase  
Life's Requite, Inc.  
The Light Foundation  
Liz & David Kennedy  
Pepsi Bottling Group  
Publix Super Markets Charities  
Raymond James Financial, Inc.  
Rooms To Go, Inc.  
The Sierra Foundation, Inc.  
Bretta Barrs Sullivan  
The Tampa Tribune

Triad Foundation  
The Victory Foundation  
The Wachovia Foundation, Inc.  
Wal-Mart Foundation  
Wesley Chapel Toyota  
Tom & Pam Wolf

## BENEFACTOR'S CLUB (\$5,000 - \$9,999)

Aegon Financial  
AmSouth Bank  
Anonymous  
Bank of America  
The Bank of Tampa  
Stewart & Tammy Bertron  
Brandon Regional Hospital  
Brandon Rotary 86  
Buster Agliano Tournament  
Caspers Company McDonald's Restaurants  
Champions Tour/Outback ProAm  
Cristina Foundation, Inc.  
Ray & Pamela Deters  
DEX Imaging  
Rex & Laurin Farrior  
Florida Hospital Zephyrhills  
Florida Orthopaedic Institute/Donjoy  
Martin-Litho  
The Lowry Murphey Family Foundation  
Mosaic  
Peter Brown Construction, Inc.  
Premier Beverage Company, LLC  
Shumaker, Loop & Kendrick, LLP  
Target  
Touching Tomorrow, Inc.  
Weyerhaeuser Company Foundation  
Michael T. Williams  
Zephyrhills Bottled Water

## CHAIRMAN'S CLUB (\$1,000 - \$4,999)

A-1 Staffing  
All American Title  
Allstate Giving Foundation  
Alltel  
Amalie Oil Company  
Amscot Corporation  
Mark & Mercedes Angle  
Anonymous  
John & Caron Armatas  
Suzette, Calvin & Mac Armatas  
Automated Petroleum  
Gary Baldus  
Bank of St. Petersburg  
BankAtlantic  
Beth Barrett & Family  
Patricia Bastille  
Cheryl Bates  
Baywest Realty  
John & Maggie Beaumont  
Beazer Homes  
Benefit Golf  
Lawrence R. Bevis II  
The Black Family  
Eric & Dori Blanc  
Bob & Sharon Blanchard  
William Blews  
Jamie Blumenthal  
The Blumenthal Family  
Jane & Tad Bowling  
Rick Brackins  
Brandon Hospital Medical Staff  
Brandon Mitsubishi Hyundai  
Brandywine Liquidators  
Marisol & Rich Brekka  
Jana Broder  
Brooks & Amaden, Inc.  
Brown's Trophies, Inc.  
Michael & Casey Brucato  
Jamie Bruning  
Bob & Karen Buesing  
Kay M. Buffington  
Mark & Bev Bullard  
Bruce Burdge  
Michael & Lisa Byrd

**CHAIRMAN'S CLUB (cont.)**

Bob Cabot  
 Sheri D. Campbell  
 CapTrust Financial Advisors  
 Gertrude E. Carey  
 Regina S. Carlton  
 Carlton Fields, P.A.  
 William & Elisa Carr  
 Sam Castellano  
 Central Florida Custom Homes  
 Betty Chambers  
 Chambers Medical Group, Inc.  
 Michael G. Charles  
 In Honor of Christine Cherry  
 Cheval Women's Club  
 Maureen Chiodini  
 Coca-Cola Enterprises Bottling Co.  
 Al & Donna Colby  
 Mary Colby  
 Philip J. Cole III  
 Scott Colman/SWF East, Inc.  
 Colonial Bank  
 Colwill Engineering  
 Michael Cosentino, Jr.  
 Glen & Sandy Cross  
 John J. Crowley  
 Lee & Lynn Culbreath  
 Curry & Associates  
 David Alexander Jewelers  
 William Penn Dawson  
 J. O. DeLotto and Sons, Inc.  
 Frank Demery, M.D.  
 Mr. & Mrs. Cesar Diaz  
 Scott and Pam Dickinson  
 Dynamic Printing  
 East Pasco Triathlon Club  
 Mark & Lorrie Eilers  
 Kenneth Eldridge  
 Laurie Ellis  
 EMI Industries  
 Energy Insurance Mutual  
 David Farash  
 Nancy Favilla & Michael Kagan  
 The Fencel Family  
 Cecelia D. Ferman  
 First Citrus Bank  
 First Data Western Union Foundation

Flooring America  
 Florida Strawberry Festival  
 Troy & Elizabeth Fowler  
 Judi & Gene Frame  
 Fred & Elizabeth Frankland  
 Alix Franzblau & Ron Sherman  
 FUTSAL Teams Northwest YMCA  
 Ryan Gadow  
 Joseph & Anne Garcia  
 Jackie & Sam Garvin  
 Roman Garza  
 Liz Gauntt  
 Giammaraco Family Fund  
 Bob & Delphine Gilbertson  
 Carole Gill  
 Evelyn Golding  
 Thomas & Joyce Gompf  
 Graphix  
 Stanley & Susan Gray  
 Hal-Tec Corporation  
 Tonya M. Hammond  
 Frank Hancock  
 Marilynn & David Harrigan  
 Malcolm & Nancy Harris  
 Alan & Denise Harvill  
 Healthy Start Coalition of Hillsborough  
 John & Sheryl Hill  
 Hillsborough Community College  
 Hillsborough County Health Department  
 Holland & Knight  
 Mitchell I. Horowitz  
 Kevin & Angelia Hunter  
 Hypnosis Events, LLC  
 Greg & Tracey Iglehart  
 GWI Investments  
 Impact  
 Harold A. Jackson  
 John & Stacey Jaeb  
 James Rivard Pontiac  
 Jarrett-Scott Ford of Plant City  
 Jee Studios of Florida, LLC  
 Dexter L. Johnson  
 Virginia B. Johnson  
 Rosemary Jones  
 Robert Kantor  
 Jay & Ronna Kennedy



Brenda & Charles Ketchey  
 Rosalind Kilpatrick  
 Guy & Debbie King  
 Jeff Kloeber  
 Chris & Kathy Koch  
 Theresa Laneve  
 Lazy Days Partners Foundation, Inc.  
 Leslie's Swimming Pool Supplies  
 Carlton Lewis  
 LifePoint Community Church  
 Linder Industrial Machinery  
 John & Julie Linton  
 Rev. & Mrs. Jay Lippy  
 Frank & Diana Llanaez  
 Dr. Dolores Lowe  
 The Ludovici Family  
 M. E. Wilson Company, Inc.  
 Jerry & Annie Maass  
 Tarie MacMillan  
 Magnetic Corporation  
 Mail Marketing  
 Mandelbaum & Fitzsimmons, P.A.  
 Joe & Melanie Mangione  
 Ralph & Bonnie Mangione  
 Manna Meals  
 Stuart Markman  
 Ernest & Amy Marquart  
 Amy & Todd Marsh  
 Tom, Monika & Julia Martin  
 Daniel Martinez  
 Mastro Subaru  
 Becky & Phil Maxwell  
 Doug & Heidi McCree  
 Buck & Eleanor McInnis  
 Lynette & Stuart McKown  
 Mendez Foundation  
 Mercantile Bank

Metro Development Group  
 Tima & John Midyette  
 Tommy & Berdina Morgan  
 Morgan Stanley/Jeff Reynolds &  
 The Reynolds Group  
 Morgan Stanley Foundation  
 Corvin Morris  
 Ed Morse Cadillac  
 Jennifer & Robert Murphy  
 The Murphy Kids  
 Martha & Park Myers  
 Nautilus  
 New Tampa Rotary Club  
 New Walk Church, Inc.  
 David & Renee Nicker  
 Diana & Harry Niles  
 Newland Communities  
 Nuveen Investments, LLC  
 Julio Orellana  
 Melody O'Shea Memorial Scholarship  
 Michael & Cynthia Pacetti  
 Jon & Emma Parsons  
 Payless Car Sales/Payless Car Rental  
 Terry L. Pepin  
 Pepin Distributing Company  
 Phil Mook Enterprises  
 Plant City Civitan Club, Inc.  
 Platinum Bank  
 Play Tampa Bay Golf, Inc.  
 Zack & Mercy Powell & Family  
 Precor  
 The Prior Family  
 Professional Accounting  
 Becky & Phyllis Pruitt  
 Betty Pruitt  
 Psychological Assessment Resource, Inc.  
 Jean C. Qualey  
 Arlinda Quiñones & Michael Santos  
 George A. Raffa  
 Red Dot Enclosures  
 Reeves Import Motor Cars, Inc.  
 Rivero, Gordimer & Company, P.A.  
 Rocky Creek Village  
 Ruffolo, Hooper & Associates M.D. P.A.  
 Norrine L. Russell  
 Sam Salvaggio

E. F. San Juan  
 Edward A. San Juan  
 Cynthia L. Sanders  
 Seer Analytics, LLC  
 Serenity Meadows  
 Seven-One-Seven Parking Enterprises  
 Dena & Richard Shimberg  
 Hinks & Elaine Shimberg Charitable Trust  
 James & Amy Shimberg Charitable Trust  
 Annette Silveus  
 Jeffery L. Singletary  
 Skanska Construction  
 Stacy Skau  
 Carolyn Mathews Smith  
 Joe, Sharon, Ryan, David, Casey & Jamie Smith  
 Scott & Karen Snapp  
 Bet & Tom Snyder  
 Cindy & Chris Sofarelli  
 George and Ashley Sorensen  
 Soroptimist International of Tampa  
 South Florida Baptist Hospital  
 Jack & Lillian Spangler  
 The Spanos Corporation  
 Sparky's Oil Company, Inc.  
 Susan K. Spurgeon  
 St. Petersburg Times  
 Star Distribution  
 Jay & Marsha Starkey  
 Laura L. Starkey  
 Ken & Kathy Stephens  
 Sean & Diane Stewart  
 James Stranger  
 Don Stine Construction  
 Stonewood Restaurant Group  
 Phyllis & David Stowe  
 John & Kaye Sullivan  
 Sullivan Rehab Services, Inc.  
 Stuart Suls  
 P. J. Summerville  
 Sunshine State Federal Savings & Loan



Sweetbay Supermarket  
 Tampa Bay Pilots Association  
 Tampa Bay Technology Forum, Inc.  
 Todd Taylor  
 TECO Energy, Inc.  
 Thomas Financial Group  
 Thomas H. Miller Insurance  
 Christopher & Karen Thompson  
 Louise S. Tighe  
 Town Chase Properties  
 Dave & Aixa Traynor  
 Steve & Tonja Trice  
 Tom & Lydia Trotter & Family  
 Tuflex Rubber Products, Inc.  
 Turbo Communications  
 Uniform Nametape Company, Inc.  
 United Way of Tampa Bay  
 University of South Florida Foundation, Inc.  
 Michael J. Valdes  
 Verner Foundation, Inc.  
 Viper Capital  
 Michele Vogel  
 Wachovia  
 Ann & Tom Wade  
 Trey Walding, DMD, PA  
 Don & Erika Wallace  
 Tom Wallace  
 The Walter Foundation  
 The Walter S. Pierce Foundation  
 Jeffrey Walter  
 Scott & Jennifer Warren  
 Bill Weber  
 WEDU  
 Nancy White  
 Gail & Paul Whiting  
 Dana & Paul Whiting  
 The Wiggins Family  
 Kelly B. Williams  
 Williams, Schifino, Mangione & Steady, P.A.  
 Women Presidents' Organization, Tampa  
 Paul & Kaycee Wood & Family  
 World of Westchase  
 Phil Wortman  
 The Yebba Family  
 James Young & Family  
 Zephyr Egg



**BOB SIERRA YOUTH & FAMILY CENTER CAPITAL DONORS**

Actas International  
 Thomas D. Arthur  
 John, Maggie, Jasmine & Angelo Beaumont  
 Emery Bettis  
 Jim & Barbara Bird  
 Cardel Master Builders, Inc.  
 The Doster Family  
 Nancy Favilla  
 Florida Digital Network, Inc.  
 Frank E. Duckwall Foundation  
 Cary & Ann Gaylord  
 GTE Federal Credit Union  
 Hillsborough County Board of County Commissioners  
 Dwayne & Bonnie Ingram  
 The Kaul Foundation  
 David & Liz Kennedy  
 Ryan Khouri  
 Kingery & Crouse, P.A.  
 Jeff & Karen Lambert  
 The Ludovici Family  
 M. E. Wilson Company, Inc.  
 Robbins Manufacturing  
 Dena & Richard Shimberg  
 Ashley & George Sorenson  
 Cy & Joanne Spurlino  
 The Walter Foundation  
 Stephen & Sonya Weinberg

**THE YMCA HERITAGE SOCIETY**

Thank you to those who have left the Tampa YMCA in their estate plan

Karen Buesing  
 Robert Buesing  
 Mary Cassidy  
 Vincent Cassidy  
 Betty Chambers  
 Maureen Chiodini  
 Roganne Clark  
 Donna Colby  
 Al Colby  
 Judi Frame  
 Bob Gilbertson  
 Delphine Gilbertson  
 Debbie King  
 Guy King  
 Tima Midyette  
 Wendy Nero  
 Jeff Stewart  
 Maureen Stewart  
 Stuart Suls  
 Doris Torr  
 Jennifer Warren  
 Scott Warren

**ASSOCIATION CORPORATE PARTNERS**

Corporate Partners support the YMCA's work of building strong kids, strong families and strong communities while providing their employees access to YMCA health and wellness activities, volunteer opportunities, childcare and more.

Blue Cross and Blue Shield of Florida  
 Fifth Third Bank  
 Florida Orthopaedic Institute/Donjoy  
 J.P. Morgan Chase  
 Publix  
 Weyerhaeuser, Inc.

**TRIBUTE GIFTS**

In Memory of Raymond Campo:

Josephine Agliano  
 Opal Blanco  
 Brooks & Amaden, Inc.  
 Carrodegua & Carrodegua, PA  
 Brenda T. Gibbs  
 Gordon L. Gillette  
 Heidt & Associates, Inc.  
 H.M. Hendry  
 Kathryn Herndon  
 Dixie MacKay  
 Manuel Martinez  
 Phil Mook Enterprises  
 Santana & Byrd, P.A.  
 Mary Lou Bondi  
 Boyd W. Burley  
 Joe Chillura  
 Cordoba Ranch Development, LLC  
 Gloria Davis  
 Theresa Diaz  
 A. Fernandez  
 Lavandera Electric Company  
 Tom Lejuene  
 Amelia Menendez  
 Marie Meyer  
 Paul Meyer  
 Morrison Homes  
 Platinum Bank  
 Naida Ramil  
 Rivero, Gordimer & Company, P.A.  
 Sanwa Growers, Inc.  
 Lawson Spare  
 Carol Torrens

In Memory of Marcus Inge, Sr.:

Peggy Inge

In Honor of Nancy Harris:

Fine Wine & Spirits Warehouse

**TAMPA METROPOLITAN AREA YMCA 2006**

Robert B. Gilbertson, Jr. – President/CEO  
 Lynette McKown – Senior VP/CFO  
 Laurie Ellis – Senior VP/COO  
 Tonja Trice – Senior VP/Children's Services & Grant Programs  
 David Hollowell – VP/Construction Management  
 Phyllis Stowe – VP/Human Services  
 Rebecca Pruitt – Director of Financial Development  
 Rosemary Jones – Director of Annual Giving & Volunteer Development  
 Suzette Armatas - Director of Marketing & Communications  
 Virginia Johnson - Group Vice President  
 Julio Orellana - Group Vice President

**BOB SIERRA FAMILY YMCA**

Robert Wiggins, Executive Director

**BRANDON FAMILY YMCA**

Tima Midyette, Executive Director

**Association Leadership****BOARD OF TRUSTEES**

Guy King, III, M.E. Wilson Company, Inc., Chair  
 Bob Blanchard, Sr.  
 Ray Campo, deceased  
 John Cannon, Tampa Fire Rescue  
 Roganne Clark, Greenacre Properties, Inc.  
 Lee Davis  
 Jim Farmer, Rogan & Associates  
 Fred Frankland, Tuflex  
 Rosemary Henderson  
 Brian Keenan, Fifth Third Bank  
 Curtis Lane, City of Tampa  
 Rick Lott, Zeno Office Solutions  
 Ralph Mangione, Williams, Schifino, Mangione & Steady, P.A.  
 Carol Mathews Smith  
 David Miller  
 Red Pittman, Smith Barney

**CAMPO FAMILY YMCA  
YMCA CAMP CRISTINA  
FISH HAWK RANCH YMCA EXPRESS**

Cindy Sofarelli, Executive Director

**CENTRAL CITY FAMILY YMCA**

Dexter Johnson, Executive Director

**DOWNTOWN YMCA  
WELLNESS CENTER**

Maureen Chiodini, Executive Director

**CHILD CARE SERVICES BRANCH**

Mary Anderson, Executive Director

**EAST PASCO FAMILY YMCA**

Clark Heter, Executive Director

**INTERBAY-GLOVER FAMILY YMCA**

Joe Mangione, Executive Director

**NEW TAMPA FAMILY YMCA**

Mike Horrigan, Executive Director

**NORTHWEST HILLSBOROUGH  
FAMILY YMCA  
WESTPARK VILLAGE YMCA EXPRESS**

Jamie Bruning, Executive Director

**PLANT CITY FAMILY YMCA**

Scott Warren, Executive Director

**COMMUNITY INITIATIVES  
FIRST TEE OF TAMPA BAY**

Jeff Leonard, Director

**HEALTH INITIATIVES**

Maureen Chiodini, Director

**OPHELIA PROJECT-TAMPA BAY**

Norrine Russell, Ph.D. Executive Director

**PARTNERS OF HILLSBOROUGH**

Jon Parsons, Director

**WE (WORKFORCE EMPOWERMENT)**

Mary Ann Kershaw, Project Director

Doug Schocken, University of South Florida  
 Joe Smith, Bisk Education, Inc.  
 Steve Spina, City of Zephyrhills  
 Cyrus Spurlino  
 Joanne Spurlino

**ASSOCIATION GOVERNANCE BOARD**

Troy Fowler, Chair  
 Robert H. Buesing, Esq., Trenam, Kemker, Scharf, Barkin, Frye, O'Neill & Mullis, P.A., Secretary  
 Stuart Suls, Treasurer  
 Mark Angle, Quest Diagnostics  
 John Brabson, Jr., Brabson Investments  
 David Brownlee, LCM Group  
 Vincent Cassidy, Majesty Title Services, LLC  
 Al Colby, Esq. Mechanik, Nuccio, Hearne & Wester, P.A.

Brett Couch, AmSouth Bank  
 Nancy Favilla, Fuentes & Kreisher Title Company  
 Alix Franzblau, Thompson Group  
 Jeff George, Bank of America  
 Tonya Hammond, Hammond & Associates Realty  
 Malcolm C. Harris, WRB Enterprises, Inc.  
 Alan Harvill, EMI Industries  
 Greg Iglehart, GWI Investments, Inc.  
 David A. Kennedy, Kennedy Investments, Inc.  
 Richard Linqanti, Carlton Fields, P.A.  
 D. Scott Luttrell, LCM Group  
 Michelle Maingot, Ernst & Young  
 Martha W. Myers, Longview Equities, Inc.  
 Steve Raney, Raymond James Bank  
 Bet Snyder, Murphey Capital, Inc.

#39

**Sense of purpose-**

Young person reports that  
 "my life has a purpose."



Tampa YMCA Branch Boards

**BOB SIERRA FAMILY YMCA**

Joe Ludovici, Esquire, Chair  
 Jan Barkett, Amalie Oil  
 Myria Evans, Hillsborough Community College  
 Nancy Favilla, Fuentes & Kreisher Title Co.  
 Lori Gibson, Pharm. D., LG Investments  
 John Guffey, M.C. Construction, Inc.  
 Robert Henderson, Real Estate Mart, Inc.  
 Jessica James, Teen Representative  
 John Linton, First Citrus Bank  
 Gerald Maass, Cryo-Cell International, Inc.  
 Zack Powell, Reeves Import Motor Cars, Inc.  
 Melissa Ransdell  
 John Salgado, Chubb Group of Insurance, Co.  
 Tommy Shannon, III, T-Bird Restaurant Group, Inc.  
 Dena Shimberg, Shimberg Homes, Inc.  
 Tom Trotter, Aileron Investment Resources, LLC  
 Lawrence Willis, Willis & Associates, Inc.  
 Ginger Willms  
 Dan Youngman, Florida Computerized Machining

**BRANDON FAMILY YMCA**

Jana Broder, Drum Magic, Chair  
 Joe Bentravato, Hillsborough Community College  
 Terry Curry, Retired  
 Evelyn Golding, Retired  
 Pam Hargrave-Thomas, Brandon Regional Hospital  
 James Jensen, MinuteMan Press  
 Laurie Joiner, Mercantile Bank  
 Eric Lopez, Citigroup  
 Pat Magruder, Nationwide Insurance  
 Gary Richardson, Aim 4 Results University  
 Carlos Soto, Hillsborough Community College  
 Frank Welch, SunTrust Bank  
 Rory Weiner, Rory Weiner, P.A.

**CAMPO FAMILY YMCA**

Jack Bailey, J.C. Penney, Chair  
 Philip Bell, Gerdau Ameristeel  
 Mark Bullard, Weyerhaeuser Company  
 Alan Chastain, Mosaic Fertilizer, LLC  
 Miller Dowdy, Metro Area Properties

Dan Doozan, Teen Representative  
 Mike Fencel, Brandon Regional Hospital  
 Jackie Garvin, Lloyd's Staffing  
 Carole Gill, CRG Training & Consulting, Inc.  
 Ruben Luna, Wachovia Bank  
 Tarie MacMillan, Partylite  
 Amy Marsh, Sullivan Rehabilitation Services  
 Jennifer Murphy, Wachovia Bank  
 Thomas Nicholson, III, Bright House Networks  
 Jessie Pinney  
 Patty Reynolds, Educator/Homemaker  
 Susan Saunders, Retired  
 John Sullivan, Winthrop Village  
 James Young, Golden Corral

**CENTRAL CITY FAMILY YMCA**

Laura Starkey, Flatwoods Adventures, Chair  
 Eddie Adams, Architect  
 Patricia Bastille, Retired  
 Larry Bevis, UBS Financial Services  
 Mike Charles, CGM Air Conditioning  
 Mary Forbes, Tampa Bay Surgery Center  
 Ann Hipson, Retired  
 Sandra Jennings, St. Petersburg Times  
 Robert Kantor, Bay to Bay Vending  
 Pastor Jeff Singletary, Idlewild Central Baptist Church  
 Debra Thrower, Social Services  
 Kimberly Simpson, Small Business Solutions  
 Jeraldine Williams-Smith, Attorney  
 Ovetta Williams, Retired

**CHILD CARE SERVICES**

Martha Myers, AmNed Properties, Board Chair

**DOWNTOWN YMCA WELLNESS CENTER**

Marilynn Harrigan, The Bank of Tampa, Chair  
 Rickey Kendall, Hartline, 1st Vice Chair  
 Burke Collins, Back To Work, 2nd Vice Chair  
 Letitia Bohner, Law Office of Paul Johnson  
 Ed Comey, Shumaker, Loop & Kendrick, LLP  
 John J. Crowley, Consultant  
 Keri Eisenbeis, City of Tampa

Denise Fairbanks, Avatar Box  
 Mitch I. Horowitz, Fowler, White, Boggs & Banker  
 Susan Johnson-Velez, Fowler, White, Boggs & Banker  
 Sam Mandelbaum, Mandelbaum & Fitzsimmons  
 Rob Nation, M.E. Wilson Company, Inc.  
 Laurie Someson, Merrill Lynch  
 Jill Vasas, SunTrust Bank  
 Adam Yalowich, Deloitte, Touche, LLP

**EAST PASCO FAMILY YMCA**

Bill Rinaldo, Scotland Yards Golf Club, Chair  
 Kevin Barrett, K.J. Barrett & Associates  
 Robert Cabot, Self-employed  
 Richard Cameron  
 Danny Dillon, Self-employed  
 Cascade Dusel, Self-employed  
 Bob Kaminiski, East Pasco Medical Center  
 Steve Spina, City of Zephyrhills  
 James Walters, Dade City Police

**THE FIRST TEE OF TAMPA BAY**

Mike Stevens, Guaranteed Golf Schools, Board Chair  
 Scott Bragan, John Hancock Financial Services  
 Glenn Burns, The Tampa Tribune  
 Tom Finley, Promotional Products, Inc.  
 Michael Garcia, OAI, Inc.  
 Bert Gaston, Freedom Financial Mortgage Corp.  
 Brad Janss, Medtronic  
 Jonathan Koss, UBS Financial Services  
 Michael Mays, MacDill AFB  
 Ben McLeish, Colliers Arnold  
 Rudy Paul, Peak Performance Golf  
 Jay Sage, Ed Morse Cadillac  
 Kennie Sims, Tampa Sports Authority  
 Mick Young, The Tampa Tribune



**INTERBAY-GLOVER FAMILY YMCA**

Chris Koch, Performix Marketing, Chair  
 Travis Bell, Keller Williams  
 Chris Brewer, Brewer & Perotti  
 Al Colby, Esq., Mechanik, Nuccio, Hearne & Wester, P.A.  
 Sherry Cornett, Chiaramonte Elementary  
 Stephanie DePue, Wachovia Insurance Services  
 Jeff Fishman, Fishman Mortgage Corp.  
 Heather Hepp, Fifth Third Bank  
 Chris Holway, Morgan Stanley  
 Jay Kennedy, Kennedy Investments, Inc.  
 Rufus Kite-Powell, PWC/IBM  
 Dennis Milam, Home Shopping Network  
 Kathleen Purdy  
 Cynthia Sanders, Airem Capital Group  
 Sean Stewart, The Stewart Co.  
 Tan Tran, Hyde Park Health Care  
 Michelle Turman, Gulf Coast Museum of Art  
 Grant Turner, Network People  
 Marie Valenti, Chiaramonte Elementary  
 Peter Young, Academy of Holy Names

**NEW TAMPA FAMILY YMCA**

Ernie Marquart, Shumaker, Loop & Kendrick, LLP, Chair  
 Jennifer Bakunas, Magnetic  
 Ginger Bean, Community Volunteer  
 Connie Bladon, Robert W. Baird & Co.  
 Brian Butler, The Rendon Group  
 Pam Dickinson, Tampa Palms Elementary  
 Angelia Hunter, Nuveen Investments  
 Sia Kusha, HNTB Corporation  
 Ben McLeish, Colliers Arnold  
 Dot Morris, Wesley Chapel Toyota  
 Ronnie Preusch, Prudential Tropical Realty  
 Peter Radeka, Florida Executive Realty  
 Greg Summers, Community Volunteer  
 Ann Wade, Community Volunteer  
 Tom Wade, University of South Florida  
 Jeff Walter, Macquarie Mortgage

**NORTHWEST HILLSBOROUGH FAMILY YMCA**

Harold Jackson, Hillsborough County, Chair  
 Craig Cascio, Wachovia Wealth Management  
 Mary Coffeen – H. Lee Moffitt Cancer Center  
 Philip J. Cole, III, State Farm Insurance  
 Roman Garza, Target  
 Lisa Joyce, Joyce Mortgage Investments Company  
 Martin Kosco, First Commercial Bank of Tampa Bay  
 Carlton Lewis, Jr., Public Service Envoy  
 Ryan Morais, Northwest Hillsborough Family YMCA  
 Todd Moran, Computer Age

**OPHELIA PROJECT-TAMPA BAY**

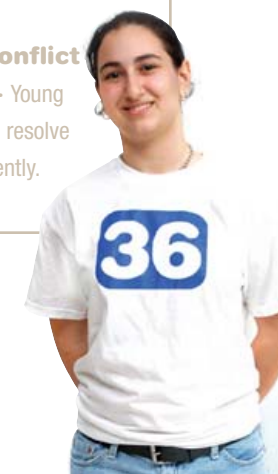
Elizabeth Fowler, Triad Foundation, Chair  
 Faith Aron, Community Volunteer  
 Anne-Marie Ayers, CB Richard Ellis  
 Carolyn Bricklemeyer, Hillsborough County School Board  
 Lisa Brock, Brock Communications  
 Jenny Carey, Arts Council of Hillsborough County  
 Lisa Couch, Community Volunteer  
 Renee Dabbs, The Victory Group  
 Sharon Dabrow, University of South Florida  
 Linda Devine, University of Tampa  
 Shannon DiBenedetto, Tribridge  
 Ann Doyle, Devereux Kids  
 Angela Ducos, Schwabe Benefit Group  
 Bevan Gray-Rogel, Graylon Consulting  
 Angeleah Kinsler, Child Abuse Council  
 Ann Leavengood-Giles, The Bank of Tampa  
 Debra Lubrano, Academy of Holy Names  
 Barbara Mayer, Community Volunteer  
 Jean Mayer, Tampa General Hospital  
 Michelle Mester, Licensed Mental Health Counselor  
 April Rose Monteith, AmSouth Bank  
 Jessica Muroff, Raymond James Financial  
 Amy Perdek, Wachovia  
 Mart Pieper, Community Volunteer  
 Cheryl Rodriguez, University of South Florida

Ellen Schuster, Life Coach  
 Jill Shepard, Academy of Holy Names  
 C.J. Smith, Community Volunteer  
 Nancy White, First Data International

**PLANT CITY FAMILY YMCA**

Jodi Smith, South Florida Baptist Hospital, Chair  
 George Banning, Wen-Lake Corp, 1st Vice Chair  
 Jack Holland, Plant City Parks and Recreation, 2nd Vice Chair  
 Charlie Bowden, Badcock Home Furnishings  
 David Carson, Chemical Dynamics  
 Jamie Davis, Esq., Trinkle, Redman, Swanson, Byrd & Coton, P.A.  
 Sharon Dicks, Hillsborough County Schools  
 James Johnigan, Servpro of N.E. Tampa  
 Anthony Joiner, Hillsborough Community College  
 Dr. Delores Lowe, Physician  
 Paty Moody, Self-employed  
 Tina Mallare-Pike, Community Volunteer  
 Brett Mueller, Sunshine State Federal Savings & Loan  
 Robert Norton, General Adjusting Services  
 Bruce Rodwell, Retired  
 Jim Scott, Jarrett-Scott Ford of Plant City  
 Steve Shouse, Edwards Jones Investments  
 Dean Snyder, Snyder Investments  
 Bill Ulbricht, South Florida Baptist Hospital  
 Jason Wade, HCC Student

**#36 Peaceful conflict resolution-** Young person seeks to resolve conflict nonviolently.







**Tampa Metropolitan Area YMCA  
Administrative Offices**  
110 East Oak Avenue  
Tampa, Florida 33602  
(813) 224-9622

**Tampa Locations**

**Bob Sierra Family YMCA**  
4029 Northdale Blvd.  
Tampa, FL 33624  
(813) 962-3220

**Bob Sierra YMCA  
Youth & Family Center**  
4015 Ragg Rd.  
Tampa, FL 33624  
(813) 269-9404

**Brandon Family YMCA**  
3097 S. Kingsway Rd.  
Seffner, FL 33584  
(813) 685-5402

**Campo Family YMCA**  
3414 Culbreath Rd.  
Valrico, FL 33594  
(813) 684-1371

**Bob Gilbertson Central City  
Family YMCA**  
110 East Palm Ave.  
Tampa, FL 33602  
(813) 229-9622

**Dade City Family YMCA**  
38035 Meridian Ave.  
Dade City, FL 33525  
(352) 521-0484

**Downtown YMCA  
Wellness Center (2 locations)**  
104 South Franklin St.  
Tampa, FL 33602  
(813) 229-1305

100 North Tampa St.  
Tampa, FL 33602  
(813) 222-1334

**East Pasco Family YMCA**  
37301 Chapel Hill Lp.  
Zephyrhills, FL 33541  
(813) 780-9622

**YMCA Express at  
FishHawk Ranch**  
16144 Churchview Dr., Suite 201  
Lithia, FL 33547  
651-4200

**The First Tee of Tampa Bay**  
7746 Temple Terrace Hwy.  
Temple Terrace, FL 33637  
(813) 984-8655

**Interbay-Glover Family YMCA**  
4411 S. Himes Ave.  
Tampa, FL 33611  
(813) 839-0210

**New Tampa Family YMCA**  
16221 Compton Dr.  
Tampa, FL 33647  
(813) 866-9622

**Northwest Hillsborough  
Family YMCA**  
8950 W. Waters Ave.  
Tampa, FL 33615  
(813) 249-8510

**The Ophelia Project-Tampa Bay**  
1905 N. Florida Ave.  
Tampa, FL 33602  
(813) 760-0577

**Plant City Family YMCA**  
1507 YMCA Pl.  
Plant City, FL 33567  
(813) 757-6677

**YMCA Camp Cristina**  
9840 Balm Riverview Rd.  
Riverview, FL 33569  
(813) 677-8400

**YMCA Express at  
Westpark Village**  
9878 W. Linebaugh Ave.  
Tampa, FL 33626  
(813) 792-7838

**YMCA Child Care Services**  
110 East Oak Ave.  
Tampa, FL 33602  
(813) 223-2895

**YMCA Community Initiatives**  
110 East Oak Ave.  
Tampa, FL 33602  
(813) 224-9622



**Mission Statement**

The Tampa Metropolitan Area YMCA, part of a worldwide fellowship which is driven by a loyalty to Judeo-Christian values, but open to all faiths, uses volunteers and resources to provide significant solutions to community needs and nurture family and individual development of spirit, mind and body.

